

ACOTA

AC-SGR-500

Electrohydraulic Operating table

Comfort and reliability



Surgical Table
all applications

Good performance

Full table radiolucent plate for X-ray and C-arm purpose

Detachable mattress section

Our standard pad is made from soft, dimensionally stable polyurethane foam with a thickness of 50 mm. Fashioned from a single piece, it has no seams, washable and antistatic. Order Code: 120.001

In order to prevent decubitus, a further Memory pad version is available to the user:

– MemoLine: visco-elastic foam, antistatic

It adapts to the body contours of the patient particularly well and reduces the pressure at the various pressure points. Order code : 120.002



Kidney bridge up



Operation concept

Backlit display indicating status information, e.g. currently chosen position, and status of battery charging, it also ensures a safe and easy handling even in the dark operation room.



Additional control at the bottom also is with backlit.



Foot pedal switch (3 commands) Item No. FPS-3

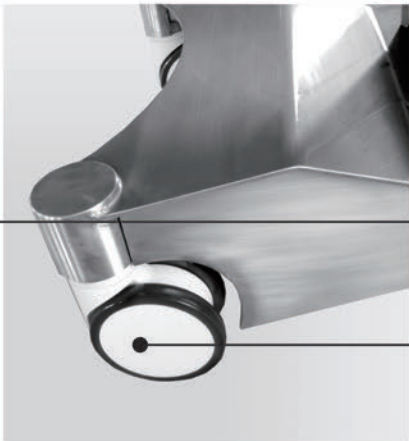
Good performance



Stainless steel inlay plates



Diam 125mm castors with locking,
universal castors



Diam 125mm castors, directional castors
With central brake system

Positions



Nr.1
Gynecology position

Nr.2
Gynecology / Giving birth

Nr.3
Endoscope application

Nr.4
Endoscope application



Nr.5
Neurosurgery

Nr.6
Neurosurgery in beach chair position

Nr.7
Neurosurgery



Nr.8
ENT/ Neurosurgery



Positions

9



13



Nr.9
General surgery

Nr.10
Spinal surgery

Nr.11
Kidney position

Nr.12
General position
(Table top movement
for C-arm)

Nr.13
Urology/TUR

Nr.14
Gynecology/Giving birth

Nr.15
Rectal surgery

Nr.16
Knee arthroscopy

10



14



11



15



12



16



Positions



Nr.17
Hand surgery



Nr.18
Upper limb trauma



Nr.19
Fractures of the neck of femur



Nr.20
Tibial shaft fracture



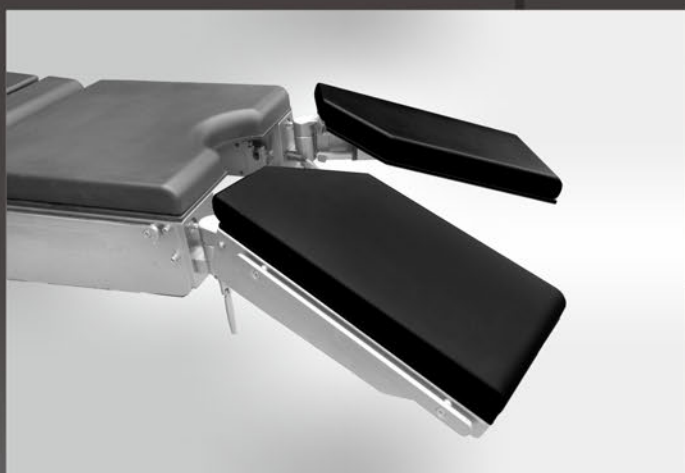
100.001 Head plate

Detachable , integrated gas spring for weight compensation, angle of adjustment for patient comfort



100.002 Gynecology aiding table / leg section

Detachable ,for Gynecology surgery, giving birth, giving support to doctors during dystocia , One section type



100.003 Leg section

Detachable
Spilt type, fold up-down, by electromotive

General accessories



1. 100.100 & 100.101

Arm rest and arm fasten belt

Integral poly pad, antistatic, 450 mm long, with arm strap and attached clamp, horizontally and vertically adjustable, tiltable via socket joint, Fasten belt a pair as optional 100.101



2. 100.102 Wristlet

with clamp, washable and exchangeable, textile strap, hook-and-loop fastener



3. 100.103 Infusion pole

upper section with 4 hooks, attachment clamp with socket joint.

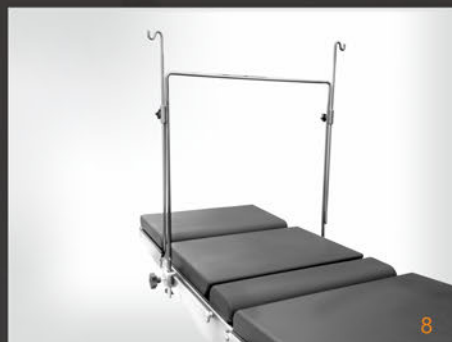
4. 100.104 Body restraint strap

Washable hook-and-loop fastener



5. 100.105 Leg restraint strap

Washable tissue strap with hook-and-loop fastener, for leg fixation, suitable for leg section.



6. 100.106 Wristlet

For attachment to anaesthetic frame 100.107 washable and exchangeable textile strap with hook-and-loop fastener, attachment.

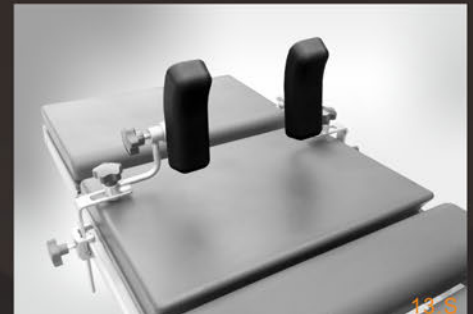
7. 100.107 Anaesthetic frame

with twist protection, height adjustable, lateral adjustment to make the frame to one side, with fixing clamp.

8. 100.108 Anaesthetic frame

with twist protection, height adjustable, with two fixing clamps.

General accessories



9. 100.109 Fixing clamp

Suitable to 100.108 Anaesthetic frame, 100.113 Shoulder&Lateral support, 100.114 Foot rest, 100.118 Arm protector.

10. 100.110 Fixing clamp

Round hole, Diam 14 mm, No-lateral angle adjustable, suitable to 100.001 Arm rest, 100.103 infusion pole, 100.106 Wristlet, 100.107 Anaesthetic frame, 100.119 instrument tray, 100.122 Tube holder, 100.130 Arm/Hand operation table, 100.131 Arm/Hand operation table, 100.134 Traction device, 100.161 Cross-bar attachment.

11. 100.111 Fixing clamp

Round hole, Diam 14mm, lateral angle adjustable, suitable to 100.117 leg holder, 100.121 instrument tray, 100.135 Knee positioning device, 100.137 Rectal (Abdomen) positioning support, 100.164 Elbow holder, 100.181 leg support, 100.182 leg support.

12. 100.112 Fixing clamp

Hexagon hole, lateral adjustable for angel needs, prevent the insertion pole rotating, suitable to 100.132 Countertraction post for upper arm.



13.S 100.113.S Shoulder support

Poly antistatic pad, width, lateral, angle, height adjustable, Multi-functional Pad (190x60mm)-Standard

13.L 100.113.L Lateral support

Poly antistatic pad, width, lateral, angle, height adjustable, Multi-functional Pad((190x60mm)-Standard

13.1 100.113.1 Multi-fuction support

Width, lateral, angle, height adjustable.

13.2 100.113.2 Pubis/sacrum/sternum support

(III.2) Covered foam Pad, antistatic (85x85mm)

13.2 100.113.3 Back/ buttock support

(III.3) Covered foam Pad, antistatic (200x120mm)



General accessories



14. 100.114 Accessories Rack

Stainless steel square-section tubular frame with rails for attachment of accessories and 1 basket, antistatic castors with lock.



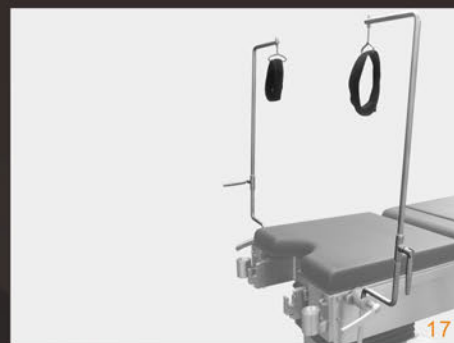
15. 100.115 Leg restraint strap

1 pair, with pads, for split leg section, incl. attachment clamps to attach to side rails.



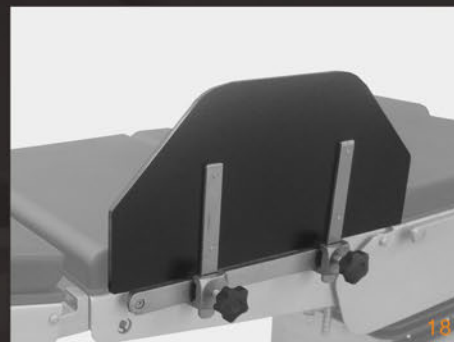
16. 100.116 Foot rest (pair)

Attachment to the side rails by means of fixing clamps, can be folded down to serve as a table-top extension, 215 x 300 mm (L x W)



17. 100.117 Leg holder (Lithotomy) (pair)

With removable loops made of washable textile straps; height & lateral adjustable, and rotating when mounted; requires fixing clamp 100.111



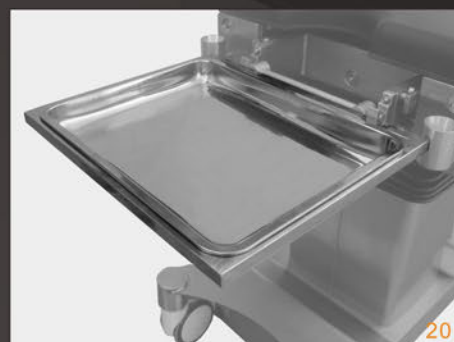
18. 100.118 Arm protector

Requires fixing clamp 100.109



19. 100.119 Instrument Tray

Height adjustable, requires fixing clamp 100.110.
Tray Size : 400x300mm Max load approx. 6kgs

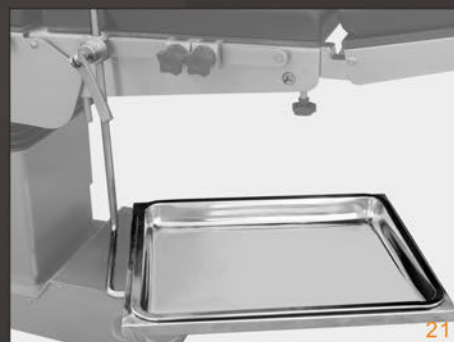


20. 100.120 Instrument Tray

Mounted on the hook of the table.
Tray size : 450x330mm Max load approx. 5kgs

21. 100.121 Instrument Tray

Height adjustable, lateral adjustable, requires fixing clamp 100.111
Tray size : 450x330mm Max load approx. 6kgs



22. 100.122 Tube holder

(No Illustration) For secure positioning of monitor cables

Accessories for orthopaedics, traumatology, spinal surgery and orthopaedic extension



1



5



2



6



3



4



7

1. 100.130 Arm/hand operating table

Radiolucent board with covered foam pad, antistatic, with double lay design suitable to X-ray.

X-ray cassette holder can be placed underneath. 700 x 300 mm (W x D).

2. 100.131 Arm/hand operating table

Radiolucent board with covered antistatic foam pad, ergonomic shape for optimal access to the surgical field, suitable to C-arm 660x 440mm (L x W).

3. 100.132 Countertraction post for upper arm

Poly pad, max. load: 12 kg, requires attachment clamp 101.112.

4. 100.133 & 100.134

Humerus traction device and weiberger traction unit, for hand and finger positioning and traction, hand plate and finger holder of plastic material, to be attached to upper arm positioning device 101.118, be worked with C-arm, max load: 30kg.

5. 100.135 Cushion

For intervertebral disc operations, also as protection for the chest, reducing pressure, keeps good respiratory and circulatory functions in the cervical and lumbar spinal surgeries. 630x460x130mm (LxWxD)

6. 100.136 Knee positioning device

Manually adjustable, with gel pad and fastening strap. Side rail attachment (requires attachment clamp 100.111). Max. load: 25 kg.

7. 100.137 Rectal (Abdomen) positioning support & (100.116) Knee-elbow positioning

Combined with 100.116 foot rest, knee-elbow positioning of patient, for spinal surgery, rectal surgery, covered poly pad, antistatic, height and lateral adjustment.

Accessories for orthopaedics, traumatology, spinal surgery and orthopaedic extension



8. 100.138 Axilla support

Padded, radiotranslucent with countertraction post, including clamps.

9. 100.139 Elbow support

Swiveling via eccentric lever joint, including clamps. Recommend to use with 100.133 & 100.134 Humerus traction and weiberger traction unit.



10. 100.140 Shoulder Surgery Device

Self-operated by use of power of the table itself, by switching the leg section. Only compatible to model 2E. Includes 100.141 and 100.142.

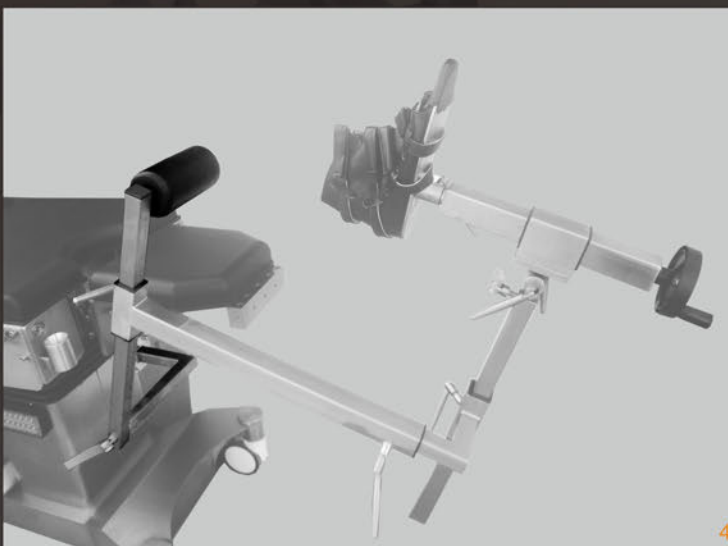
11. 100.141

Head support of the shoulder surgery device.

12. 100.142

Actuator for shoulder surgery device.

Extension device



4. 100.153

Countertraction post unit for tibia and fibula with radiolucent padded roll, height-adjustment and inclinable for attachment at extension device 100.150.

1. 100.150 Extension device

For treatment of all kinds of lower limb fractures. Essential features:

- Fast, simple and secure attaching of the device to the operating Tables.
- modular structure for optimal range of application.
- unobstructed access to the lower limbs for C-arm image intensifier and complete transillumination of the two axes, no any blind area for C-arm application.
- well-devised accessories for comfortable and precise positioning of the patient.
- Including trolley, and two supporting bars, and 100.151, 100.152, 100.154, 100.155(two pieces)

2. 100.151

For positioning plate of extension device.

3. 100.152

Sacro post (counter-traction post for the femur)

For interventions with the patient in lateral position.

5. 100.154

Countertraction post

The carbon-fiber countertraction post can be moved laterally.

Extension device

6. 100.155

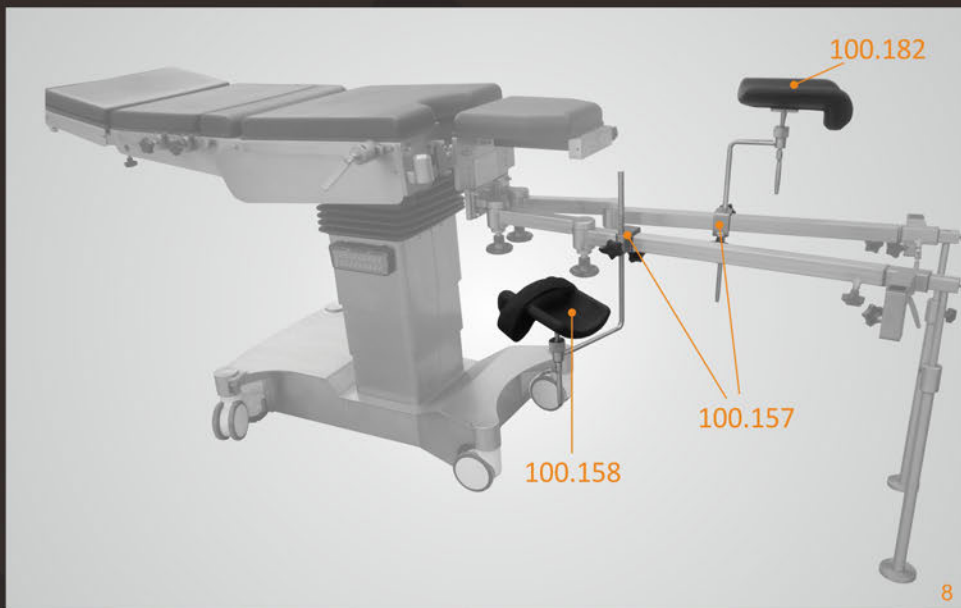
Extension part, shoe holder,
shoe for adult.(piece)

Shoe for children. (100.155.C) (piece)



7. 100.156

Pelvis plaster adapter with pelvis support,
with removable pelvis rest, adult as
standard. For children (100.156.C)



8. 100.157 Fixing clamps

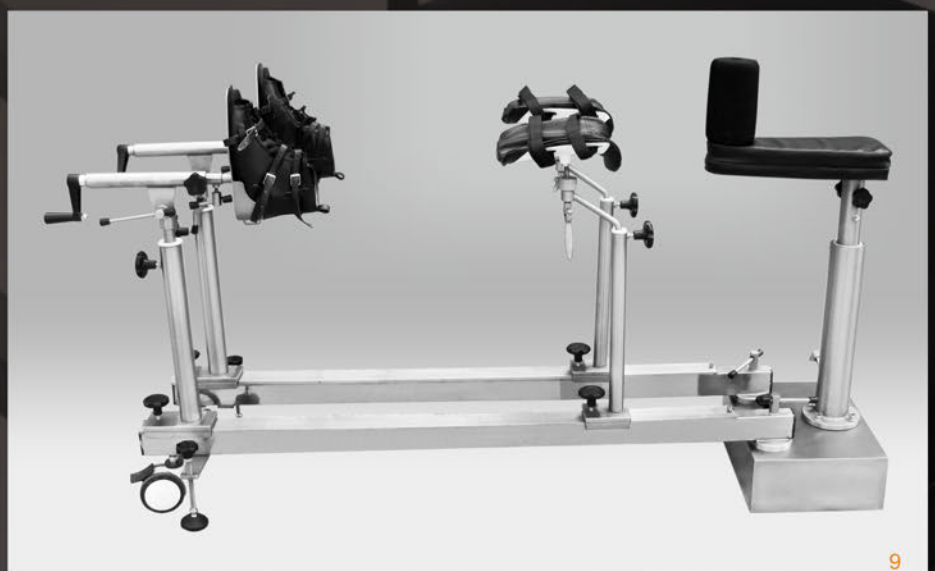
Only for 100.158 and 100.182 leg holder
for 100.150 extension device.

100.158 Lower leg support

100.182 leg rest

9. 100.159 Extension device

For treatment for legs traction,
reset and legs operation.
Not suitable for C-arm.



Accessories for neurosurgery



1. 100.160 Head rest

1-section, Pad head rest, optimal pressure distribution in prone and supine position. Max. load: 15 kg.



2. 100.161 Cross-bar attachment

Stainless steel, for seated patient positioning in neurosurgery, adjustment for different table widths. Requires 2 clamps 101.110



3. 100.162 Head Skull Clamp

For a secure and stable 3-point fixation of patient's head in supine, prone, lateral or sitting position. With 3 pins for adults.



4. 100.163 Brain retractor system

Unobstructed access to the surgical field. An open ring is crucial for skull base applications. Recommended for posterior fossa. Mini J-Arm allows movement vertically and horizontally.

5. 100.164 Elbow holder

(No Illustration) For ENT and plastic surgery . 1 pair.
Height and lateral adjustable, requires fixing clamp 100.111 and 100.160 head rest.

Accessories for gynaecology and urology

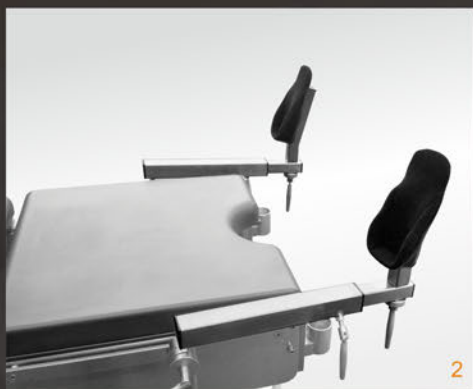


1. 100.180 Leg support (1 pair)
Height adjustable and swivelling from the foot end, servo-assisted, plastic support with gel pad for foot and lower leg, adjustable to all directions. Special attachment clamps already included.

2. 100.181 leg support (1 pair)
Especially designed for Gynecology use during the inspection, operation, giving to birth as well.
Requires attachment clamp 100.111



3. 100.182 Leg support (1 pair)
Integral poly pad, antistatic, Stainless steel, requires attachment clamp 100.111 , fastening strap, w/o clamp as optional 100.101



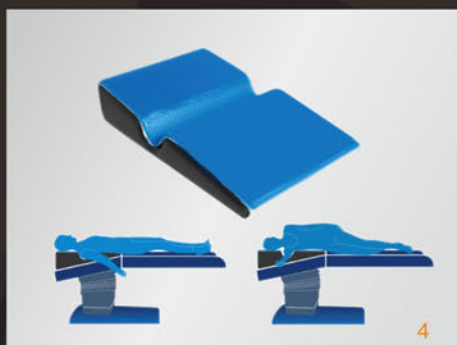
4. 100.183 Handle (1 pair)
For women grasping during inspection and give birth.

5. 100.002 Gynecology aiding table / leg section
Detachable ,for Gynecology surgery, giving birth, giving support to doctors during dystocia , One section type.

6. 100.185 Rinsing basin with drainage tube
attachment to table column, with outlet and plastic hose, dimensions of basin: 600x500(LxW)



Positioning aids



1. 101.001 Gel head rest for supine positioning (Adult)

adult size, anatomically designed so that the patient's head can comfortably rest face down, outlets for ET tubes on both sides, 280 x 240 x 140 mm (W x D x H).

101.002 Gel head rest for supine positioning (Pediatric)

paediatric, anatomically designed so that the patient's head can comfortably rest face down, outlets for ET tubes on both sides, 250 x 200 x 100 mm (W x D x H).

2. 101.003 Gel head ring (Adult)

Closed, adult size, protects the head and ears during surgery in supine position, 200 x 50 mm.

101.004 Gel head ring (Pediatric)

Closed, paediatric, protects the head and ears during surgery in supine position, 140 x 30 mm.

3. 101.005 Gel head ring (Adult)

Open, adult size, provides stability and protection to the patient's face during surgery in lateral position, 200 x 55 mm.

101.006 Gel head ring (Pediatric)

open, paediatric, provides stability and protection to the patient's face during surgery in lateral position, 140 x 35 mm.

4. 101.007 Gel pad for lateral positioning

For safe lateral positioning, to relieve pressure on the shoulder joint and protect the nerve tracts, for surgical interventions on the hip, on the shoulder or on the kidney, 700 x 500 x 160 mm (W x D x H)

5. 101.008 Thyroid gland positioning pad

Designed to protect and support neck in the thyroid and neck surgery, the pad aids to fully extend operation vision filed for surgeons. 480x390x90 (WxDxH)

6. 101.009 Gel heel pads (pair)

To support the Achilles area and relieve pressure on the patients heels during lengthy surgical procedures, 180 x 100 x 70 mm (W x D x H).

Positioning aids



7

7. 101.110 Full body pad

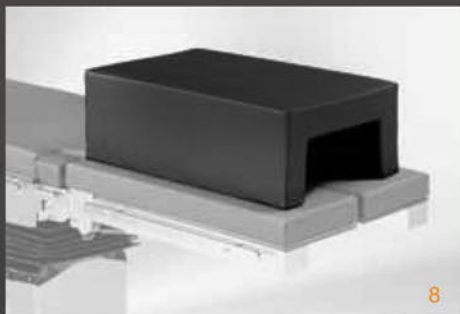
Full body pad set relieves the patient pressure during the operation

8. 101.111 Tunnel cushion

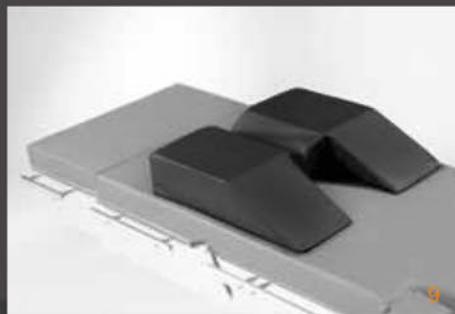
For lateral patient positioning, prevents the risk of positioning damage to the patient's legs, antistatic, covered pad with special foam core of 70 mm thickness, 650 x 400 x 220 mm (W x D x H)

9. 101.112 Double wedge pad

For supine patient positioning, designed to prevent brachial plexus paralysis and to stabilize the head, 440 x 500 x 100 mm (W x D x H)



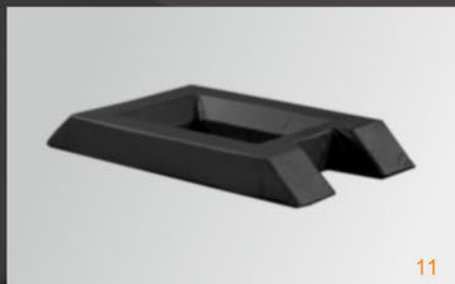
8



8



10



11

10. 101.113 Cushion

Antistatic covered poly pad, 130 x 50 x 504 mm (W x H x L)

11. 101.114

Radiotransparent for intervertebral disk operations; Dimension 640 x 420 mm x 100 mm, abdominal opening 270 x 240 mm; special foam with an electrically conductive cover.

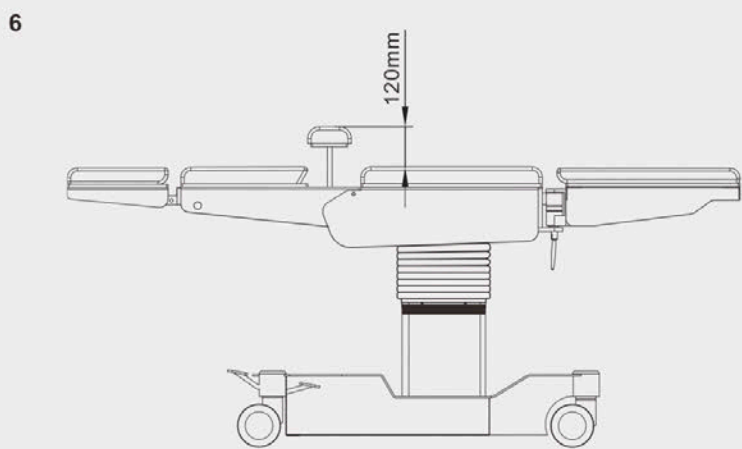
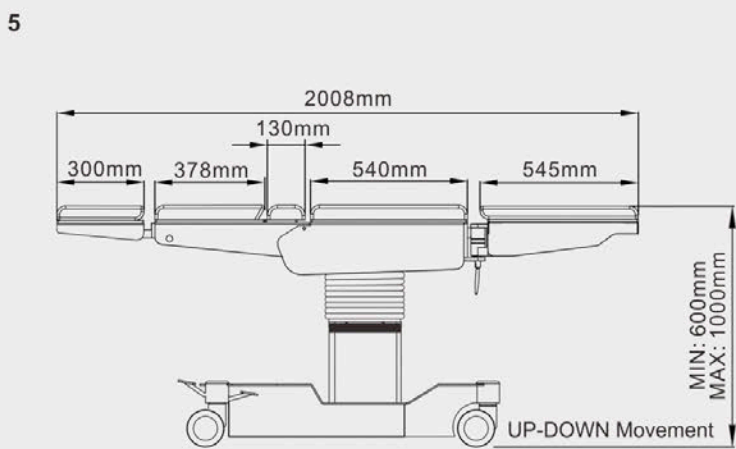
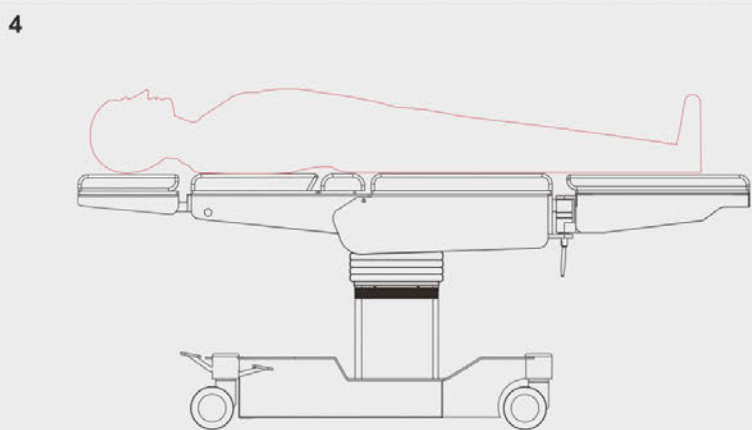
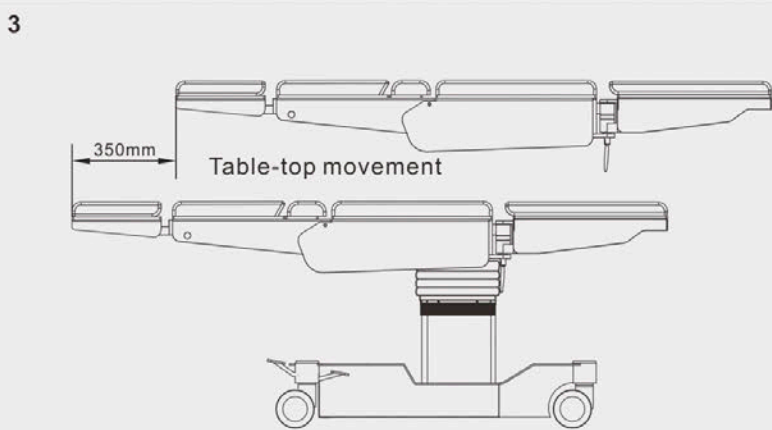
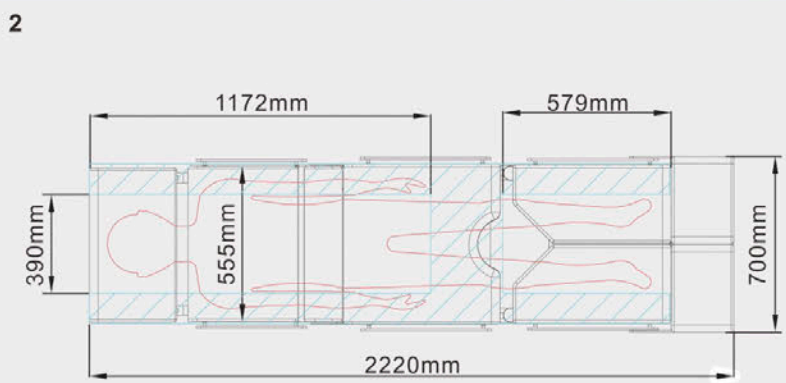
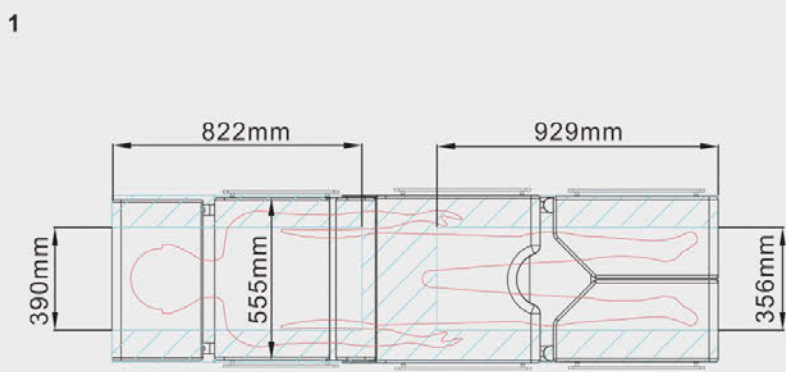
12. 101.115

For intervertebral disc operations
For positioning the patient in prone position.



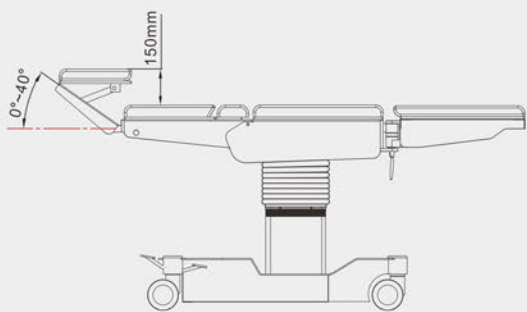
12

Basic features

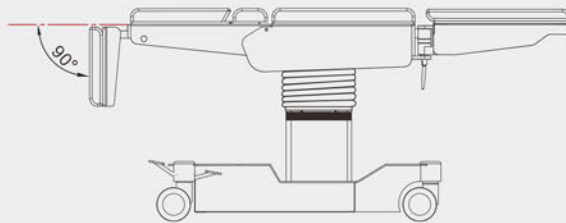


Basic features

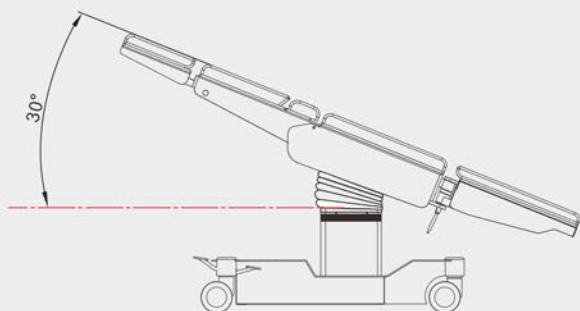
7



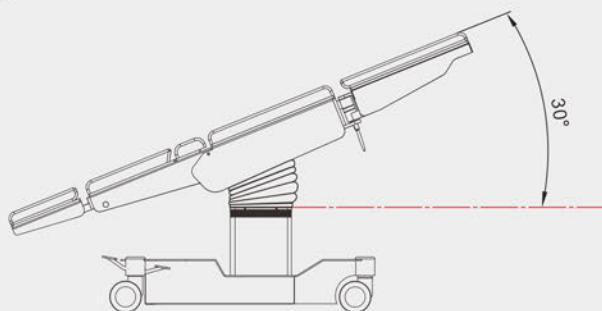
8



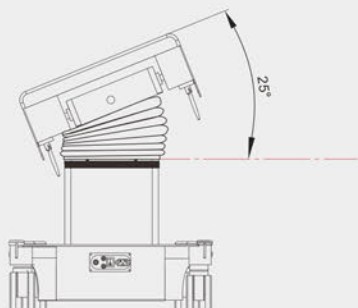
9



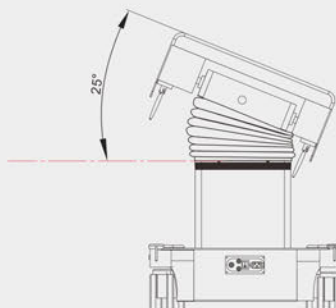
10



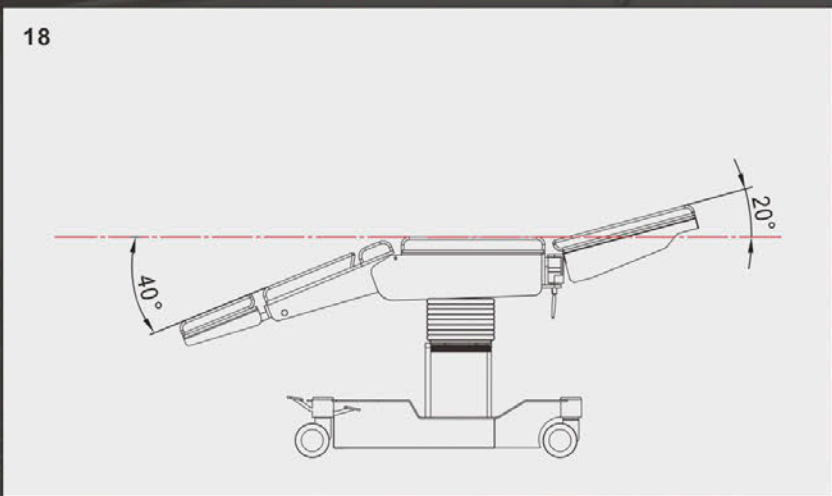
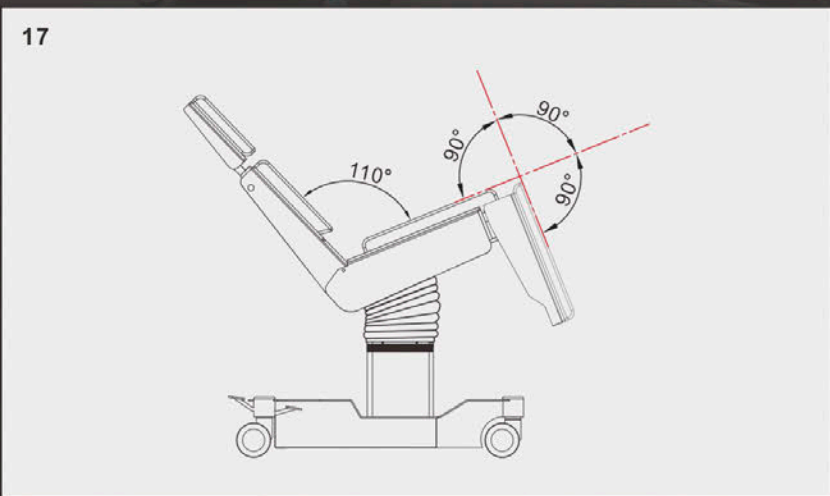
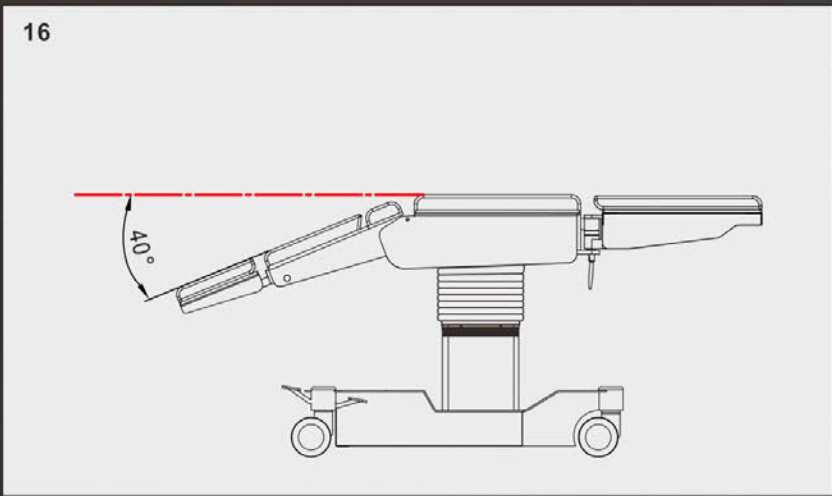
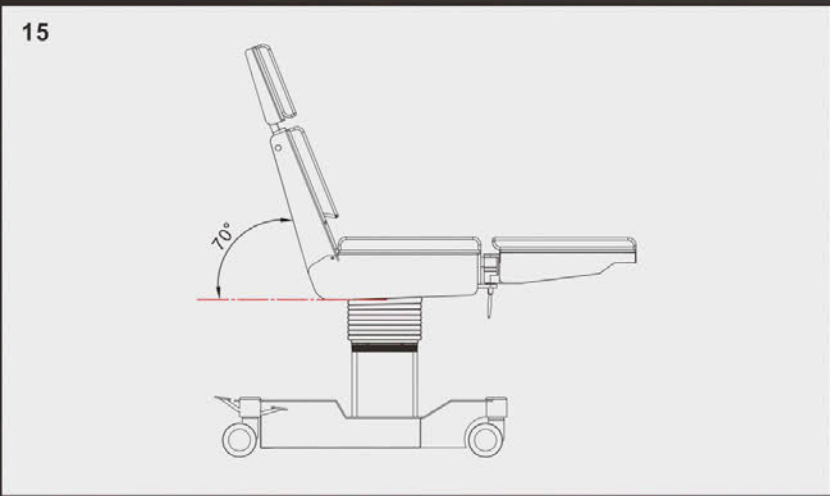
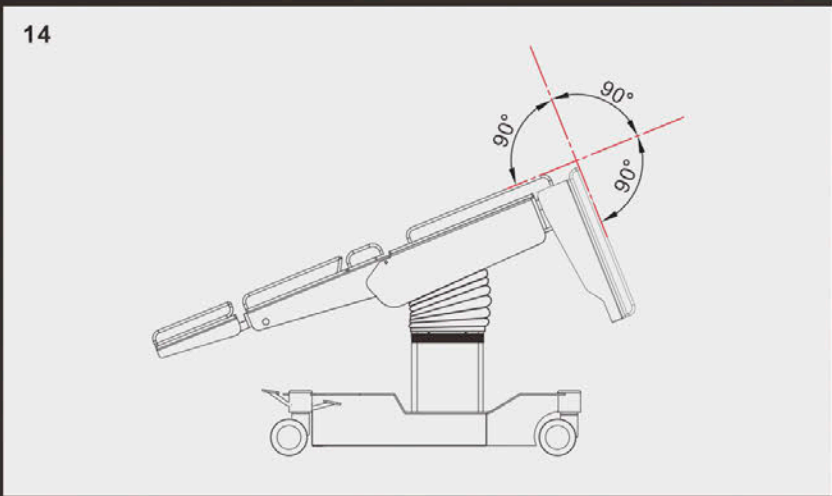
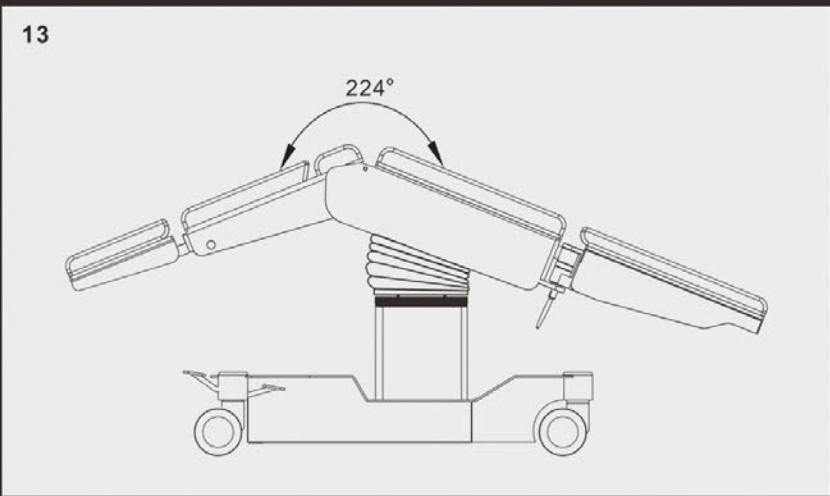
11



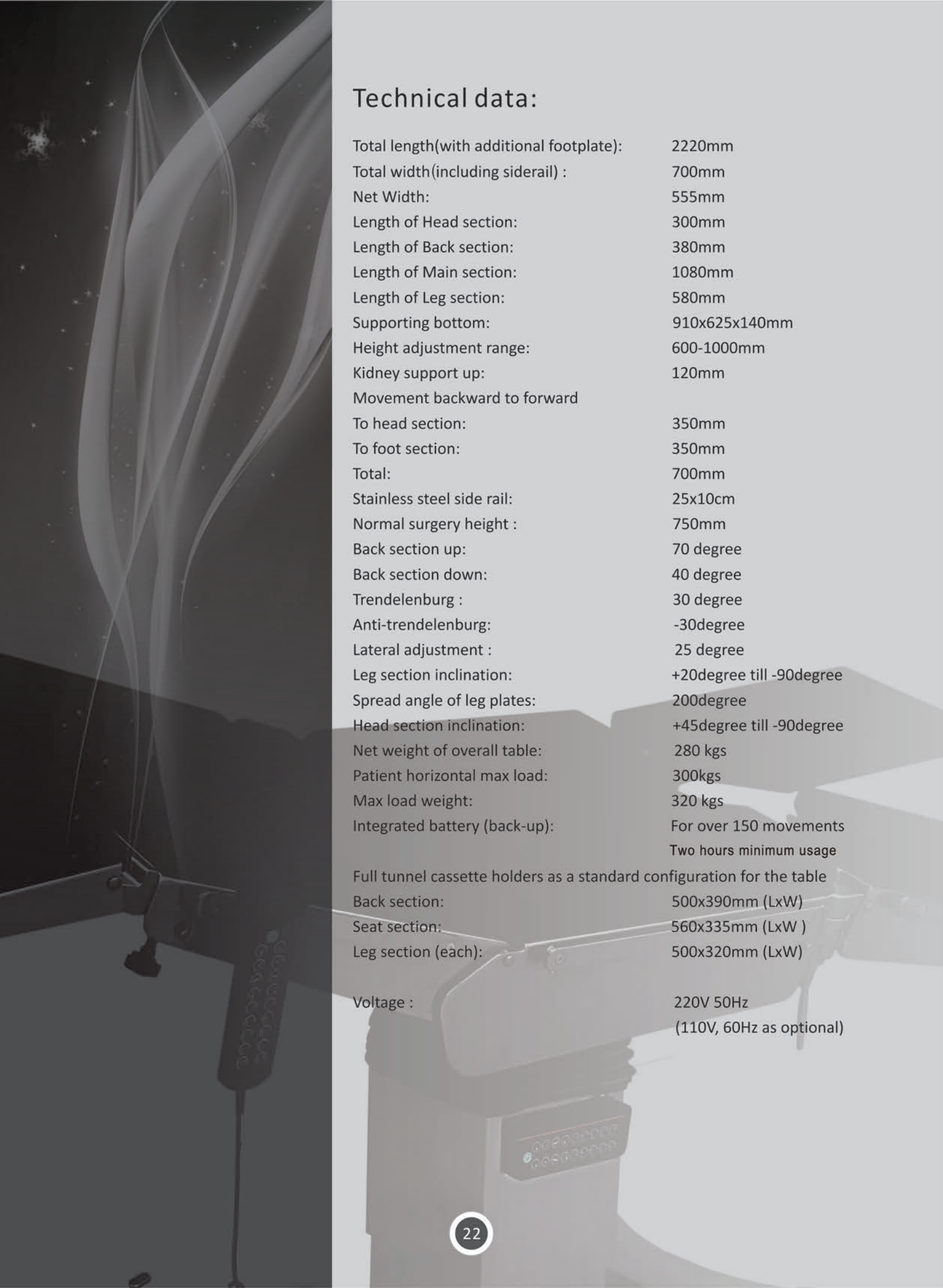
12



Basic features



Technical data:



Total length(with additional footplate):	2220mm
Total width(including siderail) :	700mm
Net Width:	555mm
Length of Head section:	300mm
Length of Back section:	380mm
Length of Main section:	1080mm
Length of Leg section:	580mm
Supporting bottom:	910x625x140mm
Height adjustment range:	600-1000mm
Kidney support up:	120mm
Movement backward to forward	
To head section:	350mm
To foot section:	350mm
Total:	700mm
Stainless steel side rail:	25x10cm
Normal surgery height :	750mm
Back section up:	70 degree
Back section down:	40 degree
Trendelenburg :	30 degree
Anti-trendelenburg:	-30degree
Lateral adjustment :	25 degree
Leg section inclination:	+20degree till -90degree
Spread angle of leg plates:	200degree
Head section inclination:	+45degree till -90degree
Net weight of overall table:	280 kgs
Patient horizontal max load:	300kgs
Max load weight:	320 kgs
Integrated battery (back-up):	For over 150 movements Two hours minimum usage
Full tunnel cassette holders as a standard configuration for the table	
Back section:	500x390mm (LxW)
Seat section:	560x335mm (LxW)
Leg section (each):	500x320mm (LxW)
Voltage :	220V 50Hz (110V, 60Hz as optional)

ACOTA

Acota B.V.

Add: Verweylaan 10,9725GM,
Groningen, The Nertherlands
Email: info@acota-medical.com
www.acota-medical.com